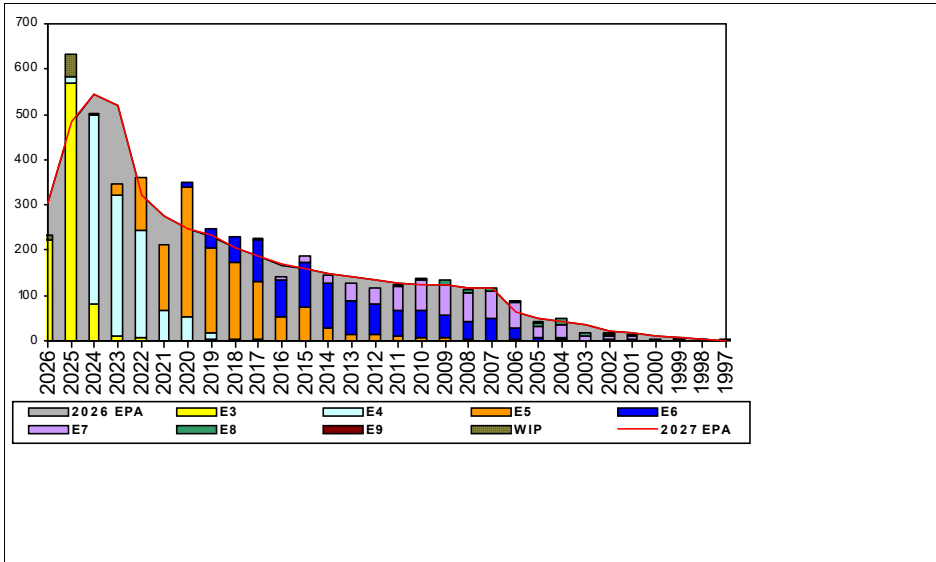


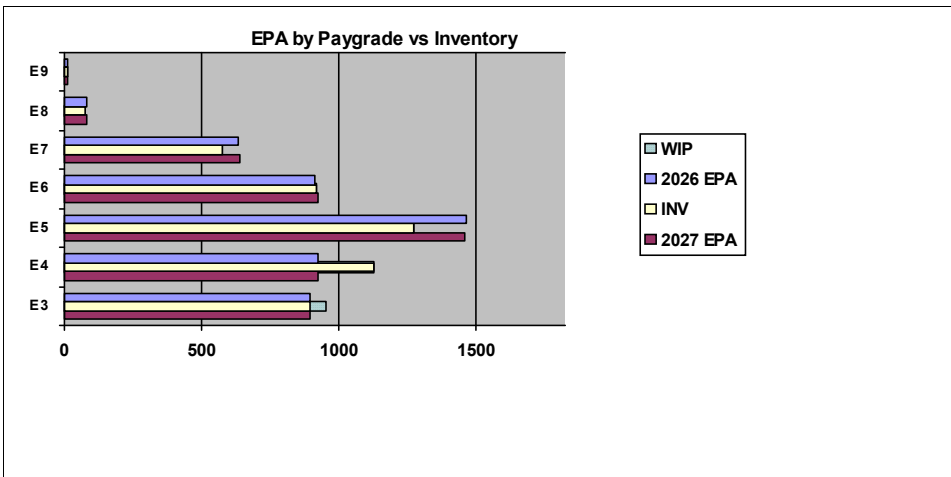
Gunner's Mate - B320



Sea Shore Flow		
TOUR	SEA	SHORE
1ST	49	36
2ND	60	36
3RD	48	36
4TH	48	36
5TH	36	36
6TH	36	36
7TH	36	36

FORCE STRUCTURE MANNING TO BA										
PG	SEA	INV	BA	SHORE	INV	BA	SEA + SHORE	TOTAL INV	TOTAL BA	
E1-3	78.4%	511	652	372.7%	41	11	83.3%	552	663	
E4	117.9%	936	794	160.8%	127	79	121.8%	1063	873	
E5	69.7%	608	872	112.6%	535	475	84.9%	1143	1347	
E6	92.1%	476	517	98.7%	373	378	94.9%	849	895	
E7	71.4%	252	353	106.7%	287	269	86.7%	539	622	
E8	120.0%	30	25	88.0%	44	50	98.7%	74	75	
E9	9.1%	1	11	100.0%	10	10	52.4%	11	21	
Total	87.3%	2814	3224	111.4%	1417	1272	94.1%	4231	4496	

TIS to PG Years	Pay Grade	E1-E3	E4	E5	E6	E7	E8	E9
TIG to PG Years	ALL Navy	TIS	2.4	4.2	8.5	12.8	18.3	21.6
	GM	TIG	1.3	1.8	4.6	5.7	5.0	4.6
	ALL Navy	TIG	1.2	1.8	4.8	5.5	7.2	5.5
	GM	TIG						



Zone Info	ZONE A	ZONE B	ZONE C	ZONE D	ZONE E	ALL ZONES
FY26 Manning:	97.0%	110.0%	99.0%	101.0%	75.0%	99.0%
FYTD RENL Rate:	77.0%	68.9%	88.0%	96.5%	41.5%	75.2%

NOTES

Conversions: Submittal are 13-18 Months from PRD.
 Retirements: Should match SEAOS/PRD or extraordinary circumstances.
 SEM/BBA: These programs are advancement opportunities program
 not an advancement guarantee, apply early and often to stay competitive.
 ECM/TECAD: ETCM Parsons, Seth A. "Casper"

	E1-3	E4	E5	E6	E7	E8	E9	TOTAL
% INV to FY26 EPA	100%	122%	87%	100%	90%	89%	79%	99%
EPA (FY26)	894	923	1462	915	635	84	14	4927
INVENTORY	897	1125	1271	918	574	75	11	4871
EPA (FY27)	894	927	1460	924	637	81	13	4936
% INV to FY27 EPA	100%	121%	87%	99%	90%	93%	85%	99%
INV + WIP / FY26 EPA	107%							100%
INVENTORY	956	59 ← E-3 and Below WIP						4930
INV + WIP / FY26 EPA	107%							100%